



ALMECO

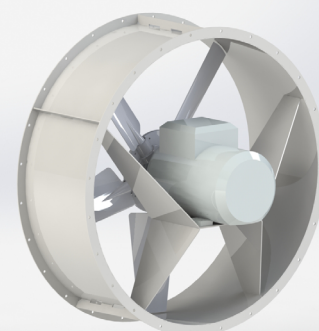
air and water technologies

AXIAL FANS

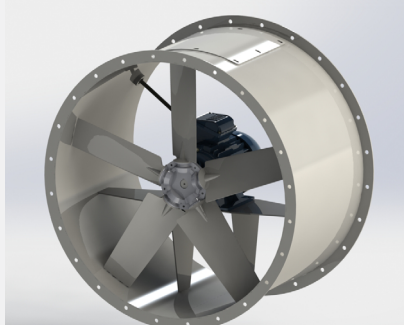
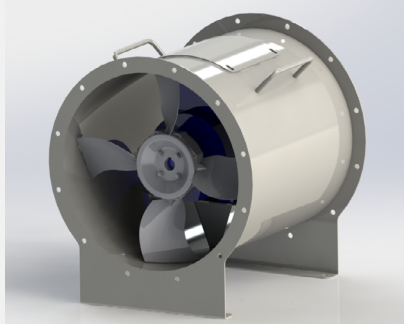


ADK - Short case axial fan

- Steel casing with welded motor pedestal, standard with hot dip galvanized finishing after construction
- Impeller with aluminium hub and glass fibre reinforced plastic or aluminium blades
- Standard IEC motors
- Standard diameters from 315 up to 1250 mm
- Volume from 0,2 m³/s up to 35 m³/s
- Special configurations on demand (tailor-made, stainless steel, ATEX ...)



ADL - Long case axial fan



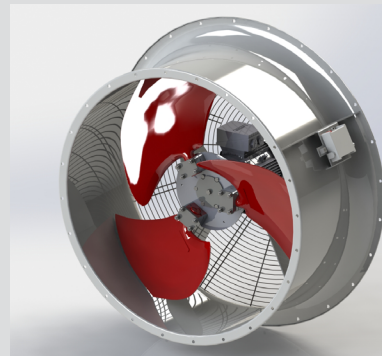
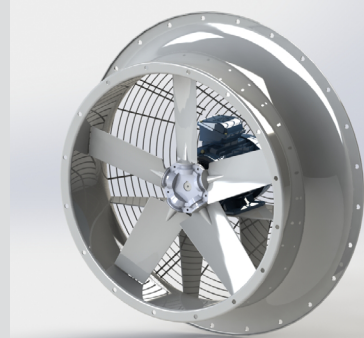
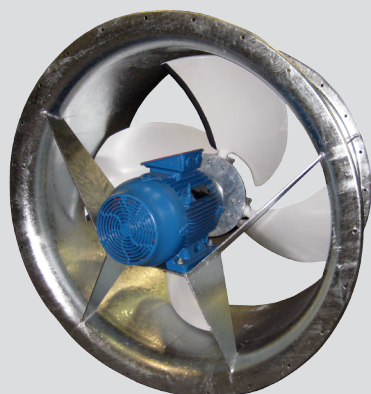
- Steel casing with welded motor pedestal, standard with hot dip galvanized finishing after construction
- Impeller with aluminium hub and glass fibre reinforced plastic or aluminium blades
- Standard IEC motors
- Motor completely inside casing
- Standard equipped with inspection door and flexible duct with cable gland
- Standard diameters from 315 up to 1250 mm
- Volume from 0,2 m³/s up to 35 m³/s
- Special configurations on demand (tailor-made, stainless steel, ATEX ...)





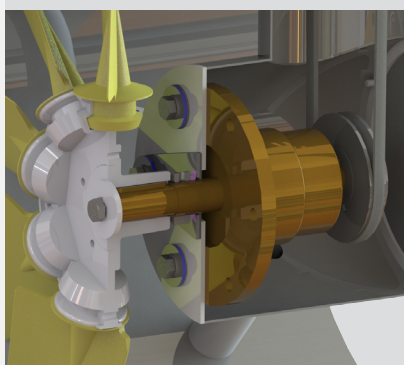
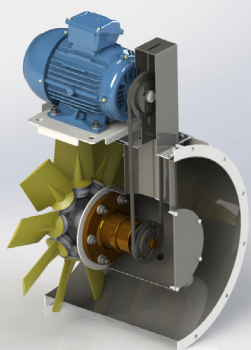
AVK - Axial fan with integrated inlet bell

- Steel casing with integrated inlet bell and welded motor pedestal, standard with hot dip galvanized finishing after construction
- Impeller with aluminium hub and glass fibre reinforced plastic or aluminium blades
- Standard IEC motors
- Standard diameters from 400 up to 1800 mm
- Volume from 0,5 m³/s up to 45 m³/s
- Special configurations on demand (tailor-made, stainless steel, ATEX ...)



ADR - Belt-driven axial fan

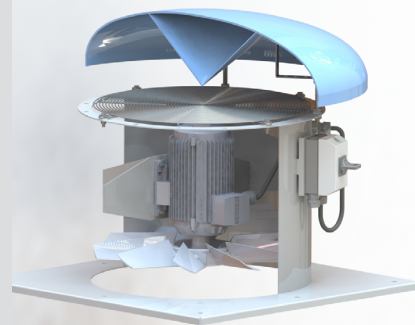
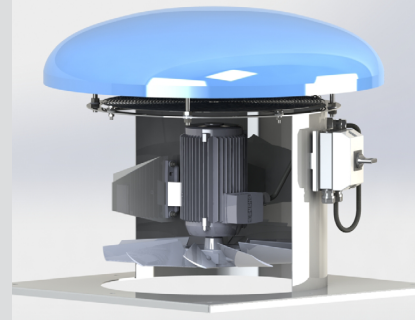
- Steel casing with welded bearing pedestal, standard with hot dip galvanized finishing after construction
- Bearing block and belt-drive completely isolated from the air stream
- Impeller with aluminium hub and glass fibre reinforced plastic or aluminium blades
- Standard IEC motors
- Standard diameters from 400 up to 1250 mm
- Volume from 1 m³/s up to 35 m³/s
- Special configurations on demand (tailor-made, stainless steel, ATEX ...)



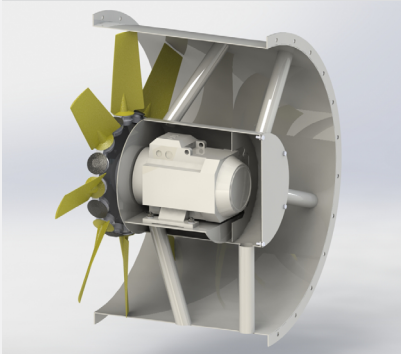
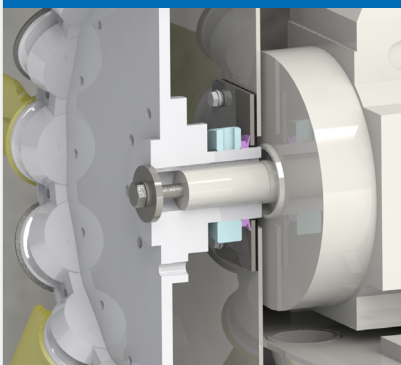
ADD - Axial roof fan



- Steel casing with welded motor pedestal and mounting plate, standard with hot dip galvanized finishing after construction
- Impeller with aluminium hub and glass fibre reinforced plastic or aluminium blades
- Standard IEC motors
- External terminal box
- Polyester rain protector hood with grid at outlet
- Standard diameters from 400 up to 1000 mm
- Volume from 0,5 m³/s up to 8 m³/s
- Special configurations on demand (tailor-made, stainless steel, Atex ...)



ADB - Bifurcated axial fan



- Steel casing with welded motor pedestal, standard with hot dip galvanized finishing after construction
- Direct driven with motor completely isolated of the air flow inside the casing
- Impeller with aluminium hub and glass fibre reinforced plastic or aluminium blades
- Standard IEC motors
- Standard diameters from 500 up to 1250 mm
- Volume from 0,5 m³/s up to 45 m³/s
- Special configurations on demand (tailor-made, stainless steel, Atex ...)



A few references

One of the longest indoor karting tracks in the world is located in the industrial park of Eupen. Since safety is their top priority, Karting Eupen was looking for an efficient ventilation system to prevent CO-poisoning by exhaust gases.

Almeco was responsible for the delivery of 41 high capacity fans of the AVK model that provide the necessary air inlet and outlet. The fans are automatically controlled at an increasing CO-value, resulting in an extremely low CO-value on the kart circuit.

A low noise installation was chosen to avoid noise nuisance in the environment. Due to its high efficiency fans and low energy costs, it is also a very green installation.

Almeco has provided Flanders' Bike Valley with 4 fans diameter 1800 mm and an available power of 180 kW. The fans are part of a wind tunnel that is used for the testing of bicycles.

The installation provides the possibility to produce an air velocity of 30 m/s (108 km/h) in a area of 2,5 by 2,5 m in a tunnel of 36 m long.

Flanders' Bike Valley now owns a reliable test bench that meets all their needs in terms of aerodynamics.

For more references:
go to www.almeco.eu/en/references



AXON

axongroup.com

OUR OTHER BUSINESS UNITS:

- fluid cooling systems
- drying solutions
- water treatment
- air treatment
- automation

Our solutions

Almeco is the reliable partner for fans, drying systems and cooling towers. With our customer, we look for the most efficient solution, either a standard or a custom made product. Moreover, we provide service and maintenance on existing products. We are specialist in water cooling towers: both delivering new towers as revamping, maintenance and water treatment. We also produce and distribute various types of industrial fans. We at Almeco know all about drying systems based on air knife technology. Engineering and design are done with constant striving for safety and quality improvement.

Industrial fans and blowers

We have a wide range of industrial fans and blowers: from small axial and centrifugal fans for standard applications to large custom-made fans for use in the most demanding environments. Our range includes axial and centrifugal fans, axial impellers, roof fans, smoke & heat extract fans, blowers and ATEX-executions.

Services for industrial fans

- Balancing
- Vibration measurements and analysis
- Noise measurements
- Replacing components, entire impellers or fans, and accessories
- Maintenance and repairs: on-site or in our own workshop
- Optimization of fans
- Upgrades



Your contact person:
Aurélien Delescluse

info@almeco.eu
www.almeco.eu

Royennestraat 51
B-7700 Moeskroen
T 0032 (0)56 85 40 80
F 0032 (0)56 85 40 81