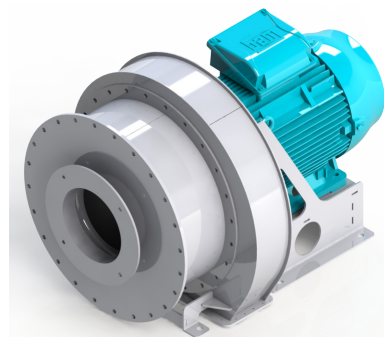
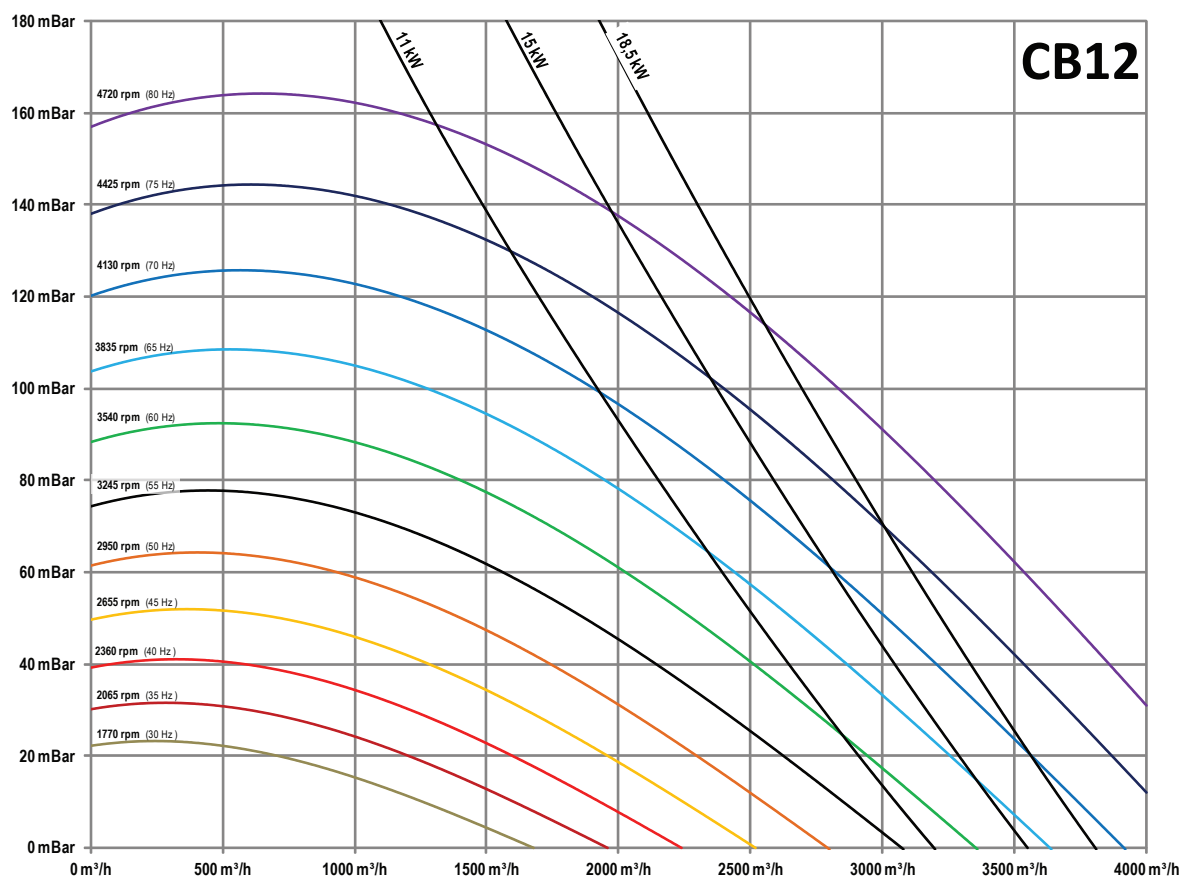


## CBI2 - DIRECT DRIVEN TWO STAGE CENTRIFUGAL FAN

<b>Motor</b>	Induction motor WEG IE3 / TEFC / B3B5 / IP55 / 2p / extended shaft / Enhanced Balancing Class	
<b>Power</b>	11kW / 15kW / 18.5kW	
<b>Nominal voltage</b>	3x 380-415V Δ / 660-690V Y 50 Hz 3x 440-480V Δ 60 Hz	
<b>Manufacturing</b>	Motor: cast iron Fan casing: coated steel RAL 7016 (or other) Impellers: coated steel	
<b>Outlet</b>	Flange (see drawing for specifications)	
<b>Speed</b>	1180 - 4425 tpm (20-75Hz)	
<b>Weight</b>	200kg	
<b>Sound pressure level</b>	Max. 96 dB(A) for a maximum speed and a power consumption of 22kW. Free inlet and connected outlet. Measured at 1m distance of the inlet under free field conditions.	
<b>Accessories</b>	<ul style="list-style-type: none"> <li>• Intake grill</li> <li>• Intake flanges</li> <li>• Inlet filter</li> </ul>	<ul style="list-style-type: none"> <li>• Vibration dampers</li> <li>• Sound enclosure (-15 à -20dBA)</li> <li>• ...</li> </ul>



### Graph



# CBI2 - DIRECT DRIVEN TWO STAGE CENTRIFUGAL FAN

## Dimensions

