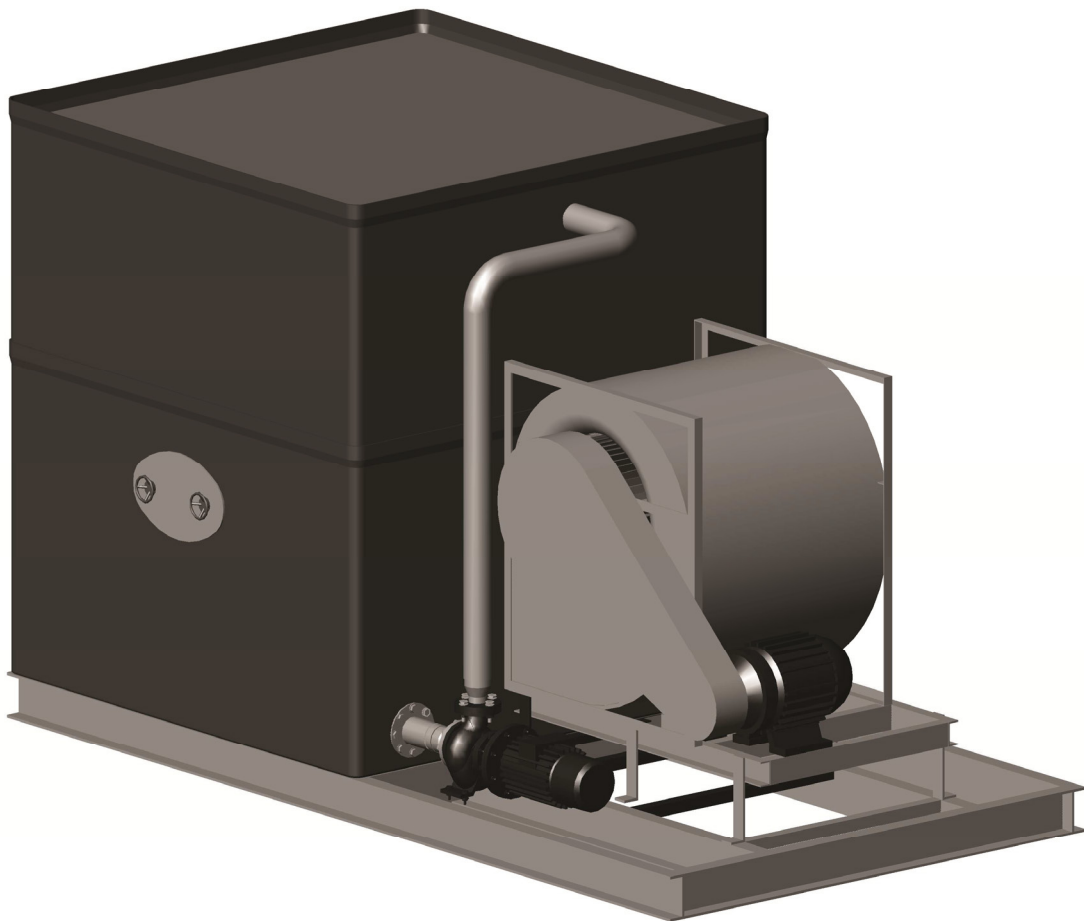


Closed circuit cooling tower type CFR-C-TG



Closed circuit cooling tower type CFR-C-TG

The type Almecco CFR-C-TG is a closed counterflow cooling tower with centrifugal forced draught fan.

This cooling tower can be used for all applications where the water to be cooled must not come into contact with air. The complete wet section of the cooling tower, the entire casing of the cooling tower and the water collection basin are made of fibreglass-reinforced polyester, which means that they are completely free of rust.

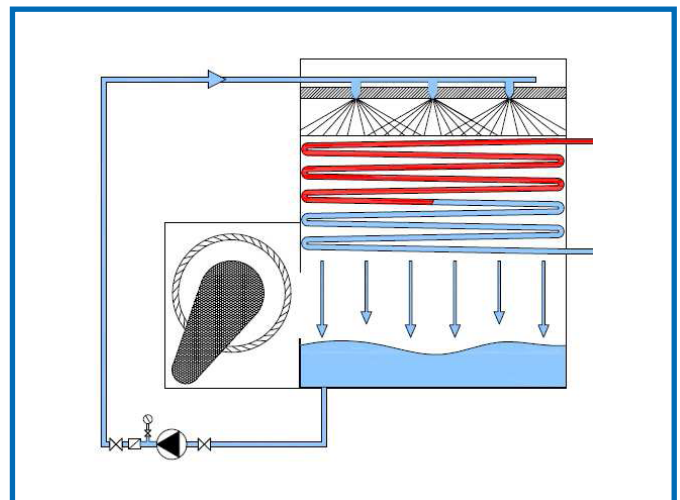
The tube bundle (heat exchanger) is made of hot-dip galvanised steel (stainless steel possible). The support structure for the cooling tower casing and the drive system is made of hot-dip galvanised steel and therefore resistant to corrosion.

All models of this type are supplied including circulation pump and recirculation circuit for the evaporation water (secondary water circuit).

Both the individual components and the cooling tower as a whole comply with the Best Available Technology (BAT) and the applicable legionella legislation.

Properties

- Materials highly resistant to all aggressive conditions, as well as to water that can be cooled down to 80°C
- The Almecco CFR-C-TG is delivered in one part, if without silencers
- Cooling tower with limited height
- Double inlet centrifugal fan with forward curved impellers, static and dynamically balanced, made of galvanized steel sheet and epoxy coated
- Each cooling tower has 1 motor-fan, so never 2 fans on 1 axis
- Centrifugal fan for low noise level
- The fan is driven by an energy-efficient motor by means of V-belts
- The water to be cooled, or water/glycol mixture, is in closed circuit and does not come into contact with air, so no contamination of the water to be cooled is possible
- All moving parts are fitted with protective grids in accordance with the applicable legislation
- The centrifugal motor-fan set is mounted on the cooling tower via a flexible transition that counteracts the transmission of vibration and achieves a low noise level
- Highly efficient droplet separator in polypropylene, according to the applicable legionella regulations
- Silent cooling tower and even more noise reduction by installing silencers (type Almecco CFR-C-TG-LN)
- Cooling tower suitable for cooling water up to 80°C (up to 95°C on request)
- Easy to open and close access hatches, quick and safe access to all cooling tower components for inspection and maintenance
- Extra options:
 - Possibility to install a silencer, both on the air inlet and the air outlet side of the cooling tower (type CFR-C-TG-LN)
 - Winter package, thermostat and immersion heater to prevent freezing of the water basin
 - Frequency controller (and motor equipped with PTC, ready for use with frequency controller)
 - Sensors for monitoring the water level in the basin, dry-running protection



Illustrations are for illustration purposes only and may differ.

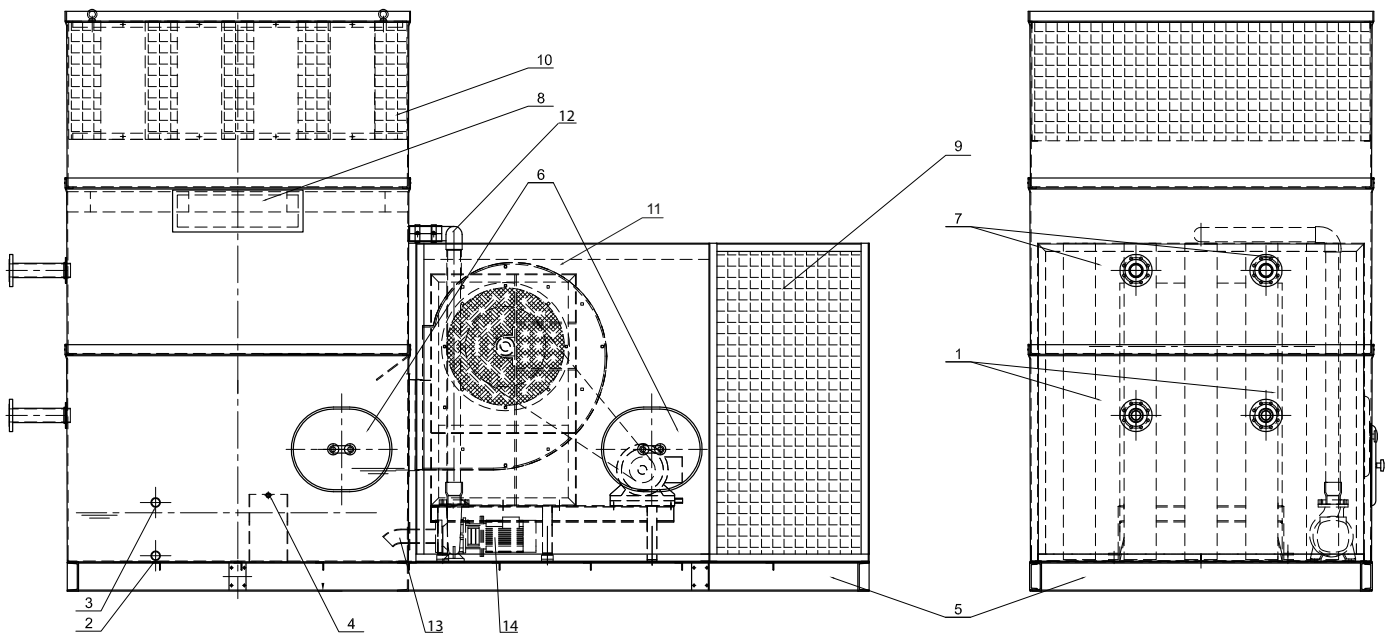
Closed circuit cooling tower type CFR-C-TG

Our advantages

- Solid, corrosion-free FRP-casings
- Use of high quality components such as motors, fans, water distribution, drift separators and fills
- Use of energy efficient motors IE3 provided for use with frequency controller
- Motor(s) of pump equipped with IE3 version
- Practical access hatches for easy, fast and safe inspection and maintenance
- High quality hot-dip galvanized heat exchanger (pipe bundle). Pipe bundle in stainless steel on request
- Assembled in the factory
**For transport, the silencers of LN models can be delivered separately*

Your benefits

- Extreme long-lifespan
- Resistant to all aggressive conditions
- Reliable operation of the cooling tower allows high process stability
- According to the applicable legionella regulations
- Low energy consumption
- Low costs of operation
- Easy to manage
- Low maintenance costs
- Matching the water composition and the environment where the cooling tower will be placed
- Assembly takes less time



1. Cooled water outlet
2. Drain water basin
3. Overflow
4. Make up water valve
5. Cooling tower frame hot-dip galvanized
6. Stainless steel inspection hatches for control and maintenance of the water distribution system
7. Hot water inlet
8. Access hatch for drift separator control
9. Air inlet silencer
10. Air outlet silencer
11. Motor-fan
12. Inlet of evaporation water
13. Suction evaporation water
14. Circulation pump evaporation water

(differences are possible depending on the model)

AXON

axongroup.com

OUR BUSINESS UNITS:

- industrial fans
- fluid cooling systems
- drying solutions
- water treatment
- air treatment
- automation

ALMECO

info@almeco.be
www.almeco.eu

Almeco Belgium (HQ)

ALMECO NV
Royennestraat 51
B-7700 Moeskroen
+32 (0)56 85.40.80

Almeco The Netherlands

ALMECO NEDERLAND BV
Postbus 32
NL-5550 AA Valkenswaard
+31 (0)40 80.80.000

Almeco France

ALMECO FRANCE SARL
Rue de Luxembourg 67
FR-59777 Euralille
+33 (0)3 28.48.26.68

PCA

info@pcawater.com
info@pcacontrol.com
info@pca-air.com

www.pcawater.com
www.pcacontrol.com
www.pca-air.com

PCA Main office

PCA NV
Wijngaardveld 10
B-9300 Aalst
+32 (0)53 21.33.55

PCA Regional office

PCA NV
Royennestraat 51
B-7700 Moeskroen
+32 (0)56 55.00.90

info@axongroup.com